

**MARSHALL COUNTY CODES DEPARTMENT & ZONING**  
**3301 COURTHOUSE ANNEX**  
**LEWISBURG, TN 37091**

**BASIC POLE BARN POLICY STATEMENT**

This guide covers a maximum size pole barn of up to 40'X32'X12' walls. Any size larger or taller will require State of Tennessee engineer designed plans.

1. Fill out Marshall County Building Permit application.
2. Provide plat plans (Site Plan): Showing dimensions of your project and its relationship to existing buildings and the distance to existing property lines. Check with appropriate jurisdiction for zoning setbacks. **Note!** Even if zoning setbacks do not require a minimum distance from the property line, Building Codes do. A minimum of 5 feet distance from the property line is required for fire separation distance. **Zoning setbacks may require 10 feet or more. The most restrictive measure will apply.**

Signature of Applicant: \_\_\_\_\_

**PLAN REQUIREMENTS**

Two sets of plans are required; one for the Marshall County Codes Office and one for the job site. If plans are not onsite, **NO INSPECTIONS WILL BE CONDUCTED.**

1. Floor Plan:
  - a. Dimensions – including pole location and dimensions between poles.
  - b. Framing Plan – including direction, size, and spacing of roof system.
  - c. Indicate window and door locations.
2. Elevations:
  - a. Front, rear and both side views with dimensions.
  - b. Finished grade line at building.
  - c. Label the depth to bottom of poles.
    - i. Note: if pole holes are less than 36" deep, State of Tennessee Engineer plans are required. (See Illustration 1)
  - d. Label pole size and type of material.
  - e. Label the side wall girt size, type of material and spacing.

- i. Note: the bottom girt must be treated wood if located within 6" of grade or touching concrete.
- f. Label the beam size and type of material at the top of poles. Detail the method of fastening the beam to the poles. The attached illustration may be used to indicate required details. (See Illustration 2)
- g. Label the rafter size and spacing or indicate engineered trusses. State of Tennessee Engineer signed and stamped truss letter required and onsite
- h. Label ceiling joists. (not required for engineered trusses)
- i. Show locations of corner bracing. (See Illustration 3)
  - i. Note: Metal brackets required at top and bottom of brace. (See Illustration 4)
- j. Label roof purlin size and spacing.
- k. Label exterior wall finish materials.
- l. Label the roof covering materials.

### **INSPECTIONS REQUIRED**

1. Before first inspection has been scheduled, the following must be onsite:
  - a. Permit and plans must be displayed onsite.
  - b. Porta Potty (or equivalent).
  - c. Trash Receptacle.
2. 1<sup>st</sup> Inspection: Setback and hole inspection after holes are dug and concrete in place but before poles are set in place.
3. Framing Inspection: After building is up and before any interior covering is installed.
4. Slab Inspection: Gravel to grade with exterior perimeter turned down to below final grade, have vapor barrier and any reinforcement in place, if being used. Have string line run both directions at finished floor height.
5. Final: Required if there is anything not completed at framing (ie. Slab, final grade, doors, etc).

Signature of Applicant: \_\_\_\_\_

ILLUSTRATION # 1

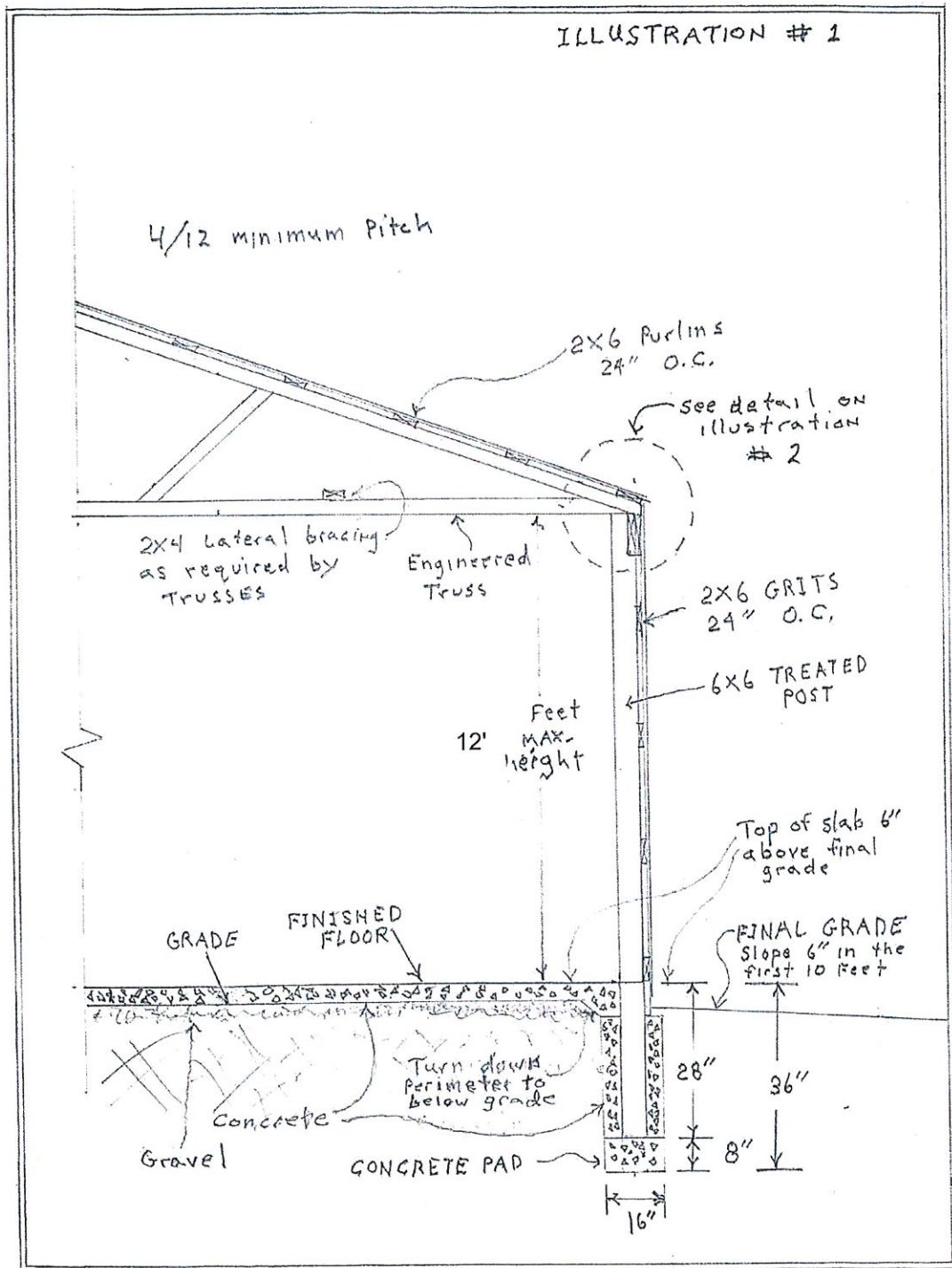


ILLUSTRATION # 2  
DETAIL FROM # 1

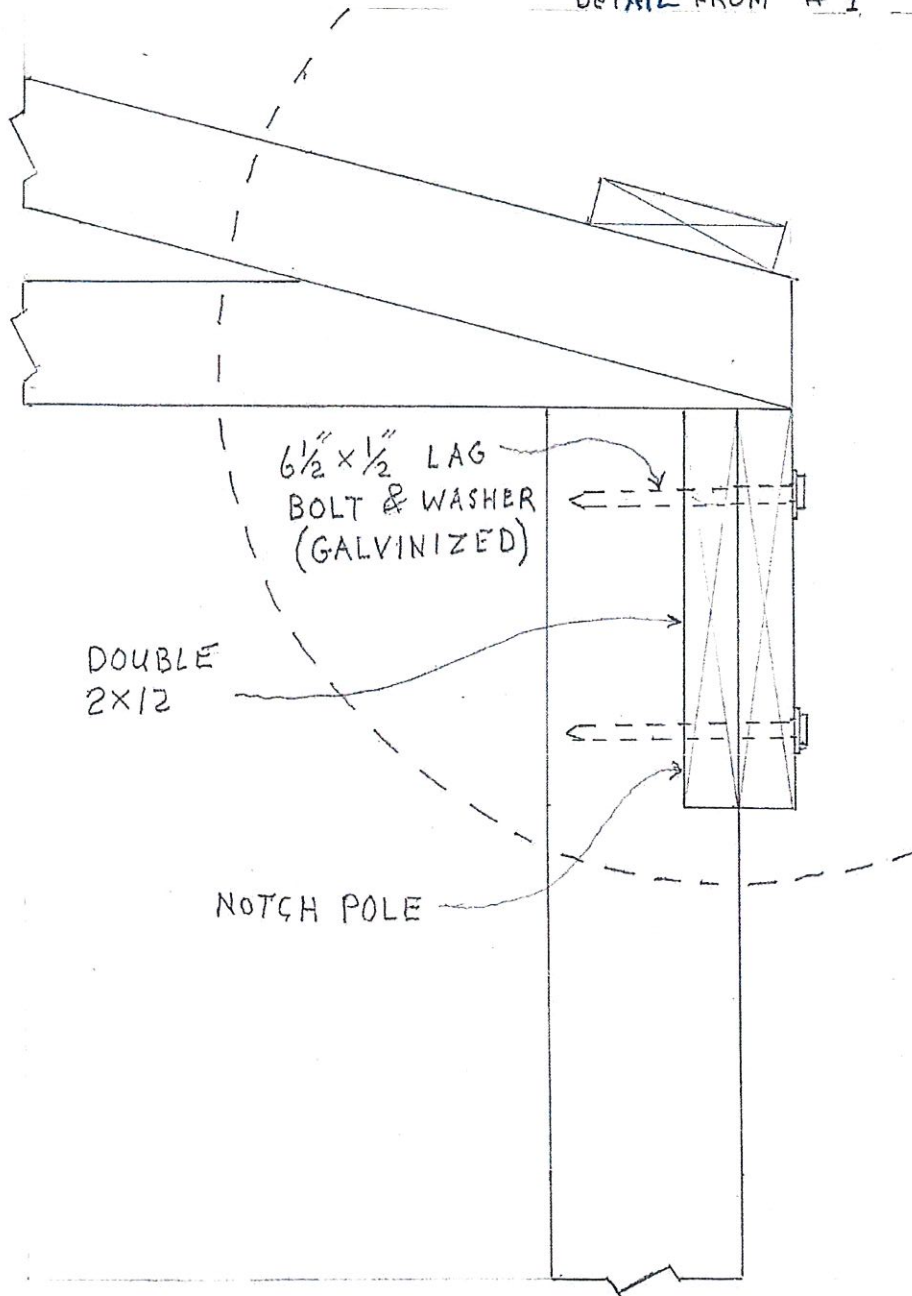
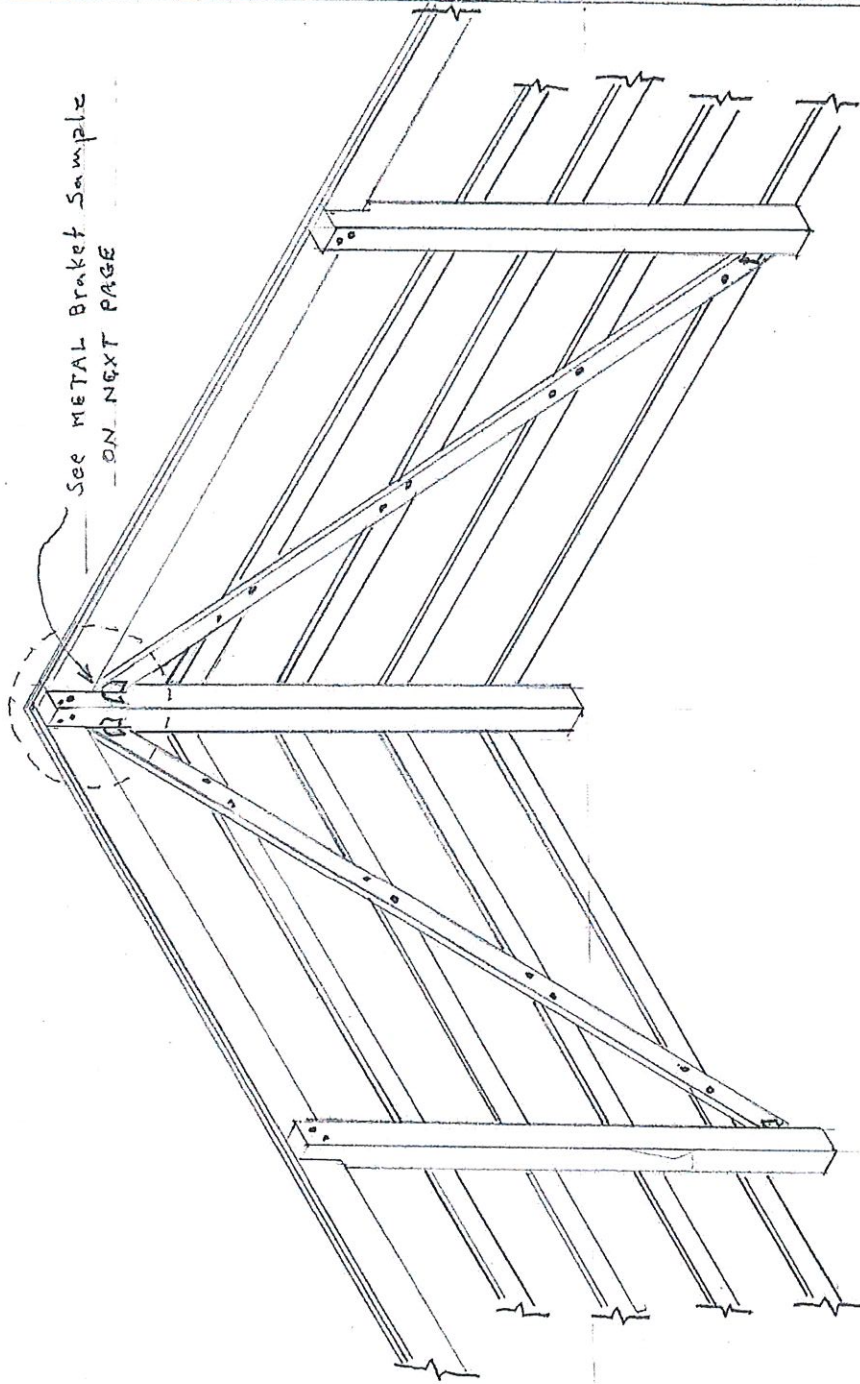
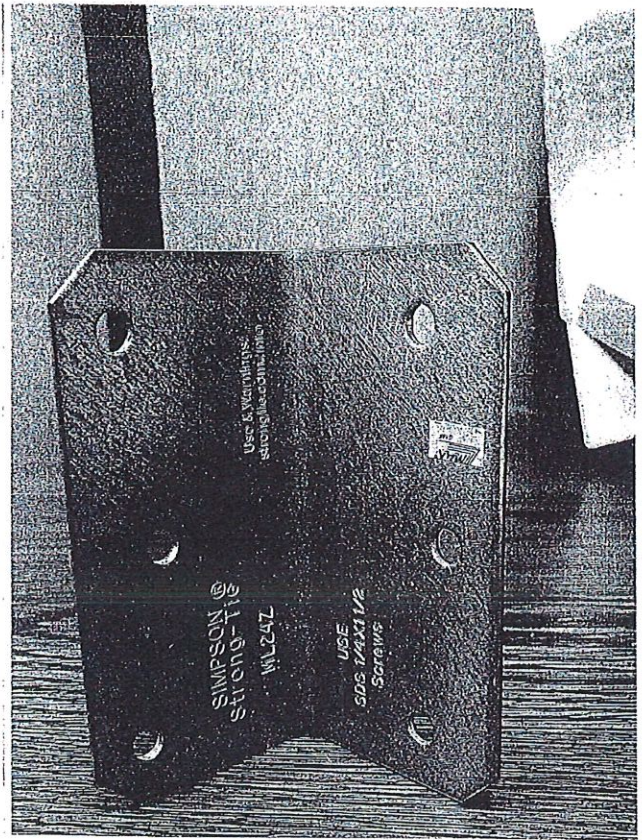




ILLUSTRATION # 3

See METAL Bracket Sample  
- ON NEXT PAGE





SAMPLE Connection Bracket  
Type